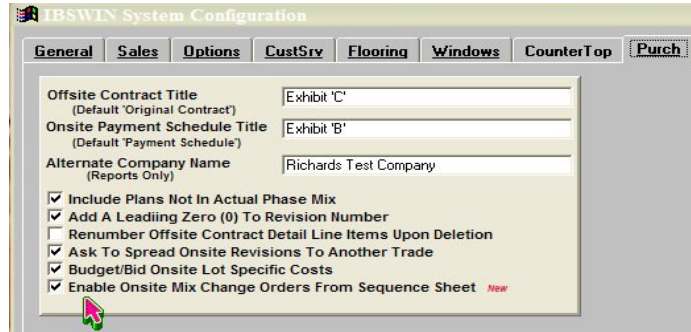


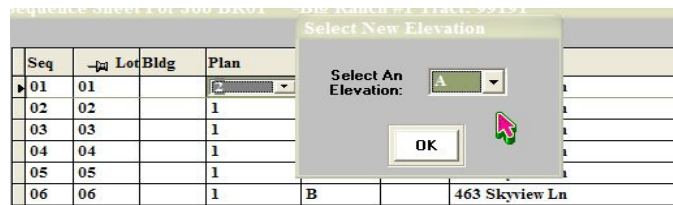
Onsite contract change orders can now be automatically created when a change in the phase mix is desired and Onsite contracts have previously been issued for the current mix. The activation of this modification is optional. To active this ability, the “Enable Onsite Mix Change Orders From Sequence Sheet” check box selection must be selected in Setup/Company Config/Purchasing tab.



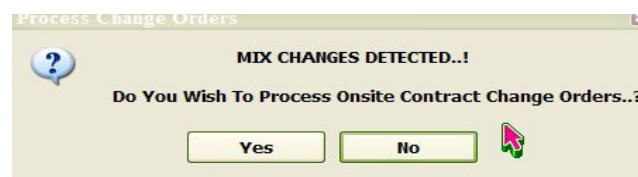
The IBSWIN user may change the mix in a phase sequence sheet at any time as long as (1) the lot has not been sold and (2) options have not been ordered for the lot. If these two criteria have been met, the lots’ plan and/or elevation may be changed in the sequence sheet (Setup/Inventory/Maintain Sequence Sheet) at any time. Further, if there have been Onsite contracts issued through the IBSWIN Purchasing module, Change Orders will be automatically issued for the net dollar change on the lot. Multiple lots can be changed at the same time and new lots can be added to the sequence sheet. **One exception exists.** The **deletion** of a lot will not generate an Onsite change order.

The procedure is as follows:

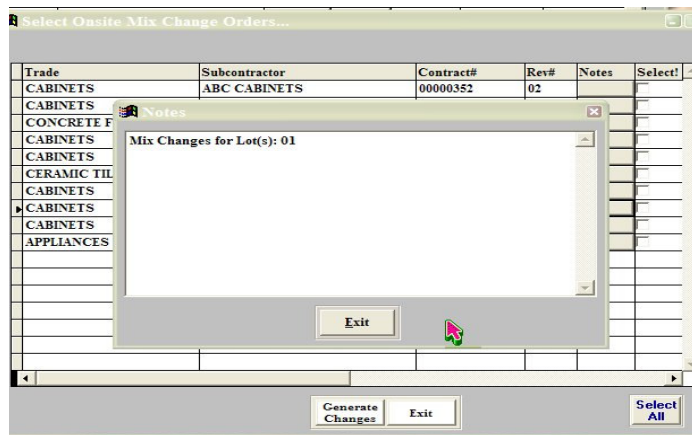
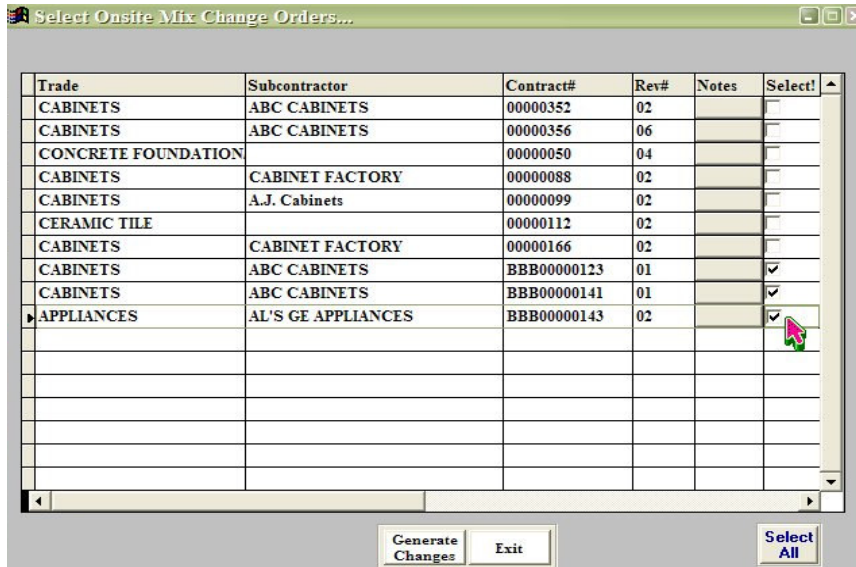
1. The user will click on the Plan or Elevation cell in the sequence sheet grid to change the plan and/or elevation. If the plan is selected for change, the user will select the new plan from the drop down menu provided. Once the new plan is selected, the user is immediately offered an elevation change screen to allow input of the new elevation if desired. The elevation must be changed at the time the plan is changed so that only one change order is created. If the elevation is not to be changed, then simply select the ‘OK’ button and the elevation will remain as it was. If only the elevation for the lot is to be changed, then simply select a new elevation (or type in a new one).



2. Once all your mix changes are completed, click on the ‘Exit’ button. You will be asked to save your changes. If you click ‘Yes’, you will be given the following message:



- Click 'Yes' if you wish to create your Mix Change Orders. When the 'Yes' is selected, the user is provided with a list of Onsite contracts that change orders can be created for. The user can select contracts affected by the mix change. Further, individual custom notes can be applied to each contract change order by selecting the note button in the change order selection screen. Once all the appropriate contracts are selected, select the 'Generate Changes' button on the screen.



- Once the 'Generate Changes' button is selected, the user is prompted to print these mix changes which will provide the following report. This report will show the New and Old costs based on the new and old plan and/or elevation. It also shows the net dollar change for the lot. This net change will be the basis for the actual contract change orders generated in Purchasing.

Pharaoh Homes - Arizona

15707 Rockfield Blvd, Suite 150
Irvine, CA 92618

CHANGE ORDER

Date: 12/22/2006

ABC CABINETS
345 HOLLYWOOD WAY
BURBANK, CA 91451
(818)988-1717 Fax: (949)476-1210

Re: Amendment "02" To Contract On Big Ranch #1, BR01

Commitment No: BBB00000123

Cost Code: B675

Change For: Mix Change Mix Changes for Lot(s): 01

- CABINETS-

Lot	Address	Plan	Elev	60.00%	40.00%	Total
				Install	Balance	
01	454 Skyview Ln	3	C	\$11,400.00	\$7,600.00	\$19,000.00
01	454 Skyview Ln	1	B	(\$6,000.00)	(\$4,000.00)	\$-10,000.00
Lot: 01 CABINETS Total:				\$5,400.00	\$3,600.00	\$9,000.00

PRIOR CONTRACT AMOUNT: \$300,000.00
TOTAL THIS CHANGE ORDER: \$9,000.00
NEW CONTRACT AMOUNT: \$309,000.00

- At this point, the actual contract change orders have still not been created. Once the user has chosen to print (or not to print) their change orders, the user is asked to commit the changes.



- If the user is satisfied with the changes that will be created in Onsite contracts, selecting the 'OK' button will now create the actual contract change orders. It should be noted here that during the time of selecting the contracts and printing the Change Order reports, other purchasing users may have gone into one of your selected subcontractors' contracts. They may even be creating their own change orders. If this happens, this mix change procedure has no choice but to bypass contracts associated with those subcontractors and you will be given an on screen message as to what change orders were NOT created. You should write these exceptions down so that you can create these mix change orders manually in the purchasing module.

It should be noted that this procedure will allow the user to process only one mix change (plan and/or elevation) per lot at a time. This is to say that if the user changes the mix and decides the change was in error, they cannot change it back to the original plan and elevation. The user MUST exit out of the sequence sheet and NOT SAVE changes.