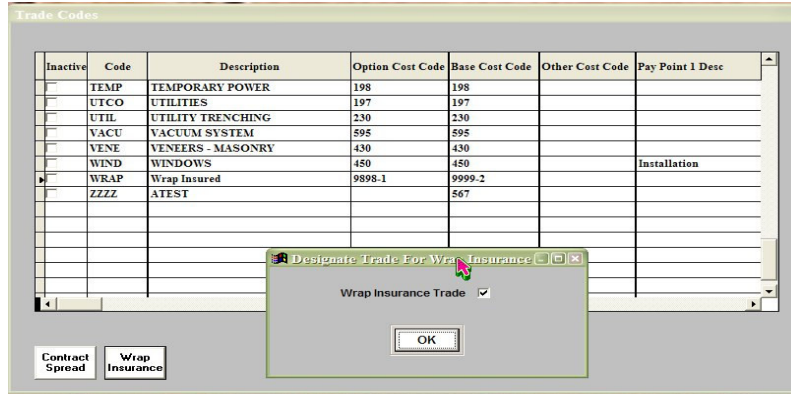
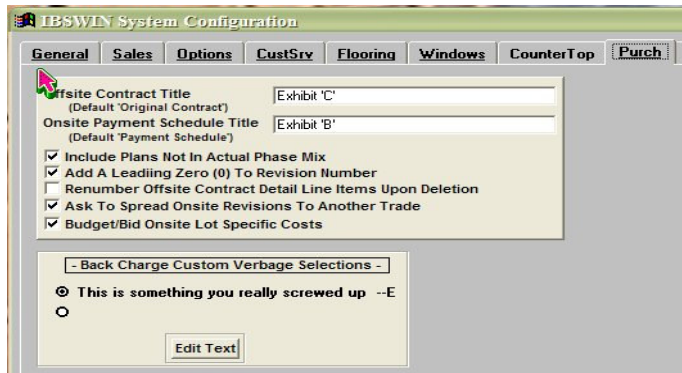


# IBSWIN WRAP INSURANCE

1. Setup/Subcontractor Trade Codes – Setup a new trade code(s) and/or designate these codes by selecting the ‘Wrap Insurance’ command button and checking the ‘Wrap Insurance Trade’ check box:



2. Setup/Company Config/Purch(asing) tab – check the ‘Ask to Spread Onsite Revisions to Another Trade’:



3. When creating the Onsite contract revision, you will be asked if you wish to spread to another trade code. Selecting ‘Yes’ here will allow you to select a trade code that is designated as a Wrap Insurance trade. Selecting this trade will tag this Onsite revision as a Wrap Insurance Onsite contract item for export and reporting.



4. You may Isolate, Include or Exclude Wrap Insurance Onsite contract entries when printing the ‘Contract Summary by Phase’ report found in Purchasing and Reports/Purchasing. Selecting the appropriate runtime report parameters will allow you select the aforementioned report attributes.

The screenshot shows a dialog box titled "Contract Commitments Report" with a sub-header "Contracts Summary By Phase Report". The dialog contains the following controls:

- Radio buttons for "All Phases" (selected) and "Selected Phases".
- Radio buttons for "All Subs" (selected) and "One Sub".
- A "Sub:" label followed by a dropdown menu.
- Radio buttons for "All Contracts" (selected), "Onsite/Direct", and "Offsite/Indirect".
- Checkboxes for "Exclude Wrap Deducts" and "Wrap Deducts Only".
- Radio buttons for "Subtotal On Cost Code".
- Radio buttons for "Print" (selected) and "Display".
- "OK" and "Exit" buttons at the bottom.